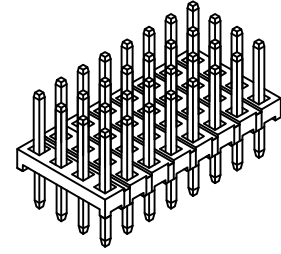
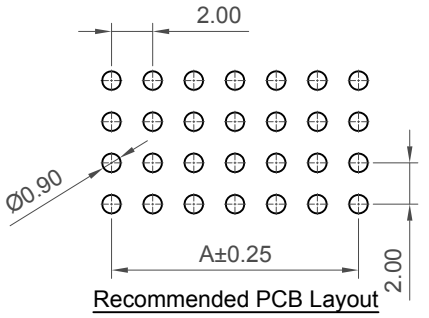
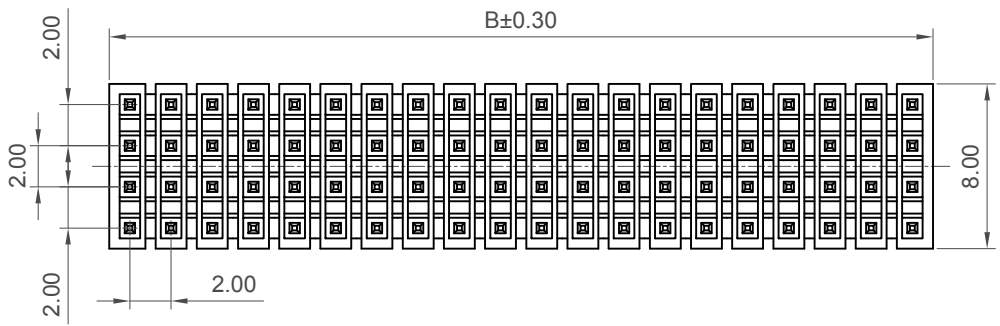
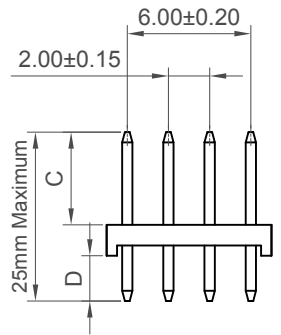
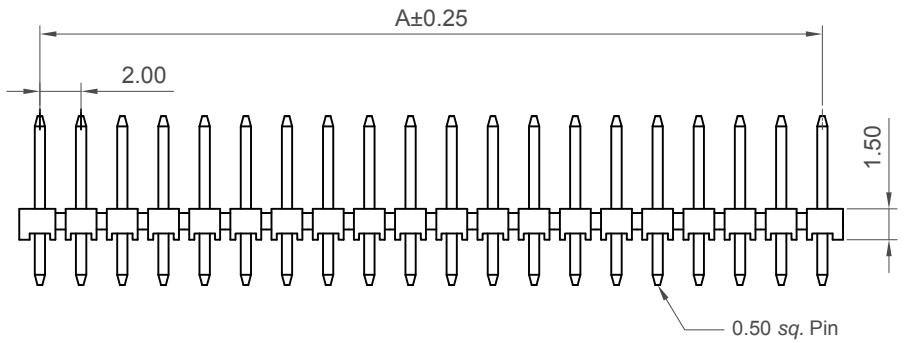


H
G
F
E
D
C
B
A



No. of Contacts	Dimensions	
	A	B
8	2.00	4.00
12	4.00	6.00
16	6.00	8.00
20	8.00	10.00
24	10.00	12.00
28	12.00	14.00
32	14.00	16.00
36	16.00	18.00
40	18.00	20.00
44	20.00	22.00
48	22.00	24.00
52	24.00	26.00
56	26.00	28.00
60	28.00	30.00
64	30.00	32.00
68	32.00	34.00
72	34.00	36.00
76	36.00	38.00
80	38.00	40.00
84	40.00	42.00
88	42.00	44.00
92	44.00	46.00
96	46.00	48.00
100	48.00	50.00
104	50.00	52.00
108	52.00	54.00
112	54.00	56.00
116	56.00	58.00
120	58.00	60.00
124	60.00	62.00
128	62.00	64.00
132	64.00	66.00
136	66.00	68.00
140	68.00	70.00
144	70.00	72.00
148	72.00	74.00
152	74.00	76.00
156	76.00	78.00
160	78.00	80.00



Specifications

Material
 Contact : Copper Alloy
 Insulator :
 Standard: Polyamide, Nylon 6T, UL 94V-0
 Options: Polymer, LCP, UL 94V-0

Plating
 See Ordering Grid

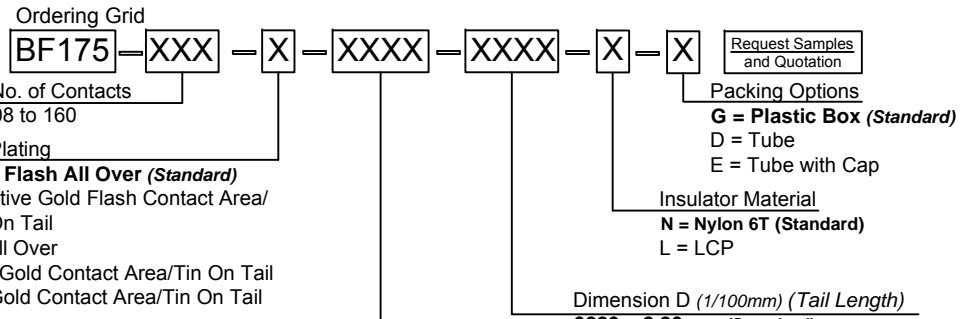
Electrical
 Current Rating: 2 Amp Per Pin
 Insulation Resistance: 1000 MΩ min
 Contact Resistance: 20 mΩ max.
 Dielectric Withstand Voltage: AC 500 V

Mechanical & Environmental
 Operating Temperature: -40°C to +105°C

Soldering process:
 Nylon 6T (Standard) -
 IR Reflow: 260°C for 10 sec.
 Wave: 230°C for 5-10 sec.
 Manual solder: 350°C for 3-5 sec

LCP (Option) -
 IR Reflow: 260°C for 10 sec.
 Wave: 250°C for 5-10 sec.
 Manual solder: 350°C for 3-5 sec

Mates with (Subject to pin length)
 BF180



Contact Plating
A = Gold Flash All Over (Standard)
 B = Selective Gold Flash Contact Area/
 Tin On Tail
 C = Tin All Over
 G = 10µ" Gold Contact Area/Tin On Tail
 I = 30µ" Gold Contact Area/Tin On Tail

Dimension C (1/100mm) (Post Height)
0450 = 4.50mm (Standard)
 Or specify Dimension C (eg 0250 = 2.50mm)
 (Maximum 1500 = 15.00mm)
 (Minimum 0050 = 0.50mm)

Dimension D (1/100mm) (Tail Length)
0220 = 2.20mm (Standard)
 Or specify Dimension D (eg 0250 = 2.50mm)
 (Maximum 1500 = 15.00mm)
 (Minimum 0050 = 0.50mm)

Part Number		Product Description	
BF175		2.00mm Pitch Pin Header, Quad Row, Through Hole, Vertical	
Drawing Date		8th April 2007	
By	CC	Tolerances (Except as Noted)	Units:
Detail	Drawing Release	Length: X. ± 0.30 X.X ± 0.25 X.XX ± 0.15 X.XXX ± 0.10	Metric (mm)
Revision	A1	Angle: X.° ± 5° X.X° ± 3° X.XX° ± 1° X.XXX° ± 0.5°	3rd Angle Projection
Date	11/09/17		



This drawing is confidential and copyright of Global Connector Technology, Ltd (GCT). This drawing must not be copied or disclosed without written consent. E & OE



Not to Scale	Drawn By RD	Sheet No. 1/1
--------------	-------------	---------------