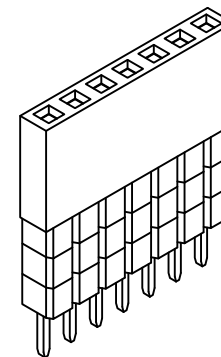


Recommended PCB Layout



Specifications 规格

Material 物料

Insulator 绝缘体:
 Standard 标准: Polyamide聚酰胺, Nylon 6T, UL94 V-0
 Options 可选: Polymer 聚合物, LCP, UL 94 V-0
 or Ployester 聚酯, PBT, UL94 V-0
 Contact 端子: Phosphor Bronze

Plating 电镀

Contact 接触: See Ordering Grid

Electrical 电气

Current Rating 电流额定值: 3 Amp Per Pin
 Contact Resistance 接触电阻值: 20 mΩ max.
 Insulation Resistance 绝缘电阻值: 5000 MΩ min.
 Dielectric Withstand Voltage 耐电压: 600 V AC

Mechanical & Environmental 机械 & 环境

Operating Temperature 工作温度: -40°C to +105°C

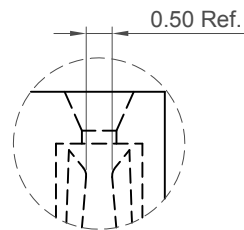
Soldering Process 可焊性

Nylon 6T (Standard 标准物料)
 IR Reflow 回流焊: 260°C for 10 sec.
 Wave 波峰焊: 230°C for 5-10 sec.
 Manual Solder 人工焊接: 350°C for 3-5sec
 LCP (Option 可选物料)
 IR Reflow 回流焊: 260°C for 10 sec.
 Wave 波峰焊: 250°C for 5-10 sec.
 Manual Solder 人工焊接: 350°C for 3-5 sec
 PBT (Option 可选物料) -
 Manual Solder 人工焊接: 330°C for 3-5 sec.
 (Not suitable for hi-temp process 不适合高温制程)

Mates with 配套之公头

(Subject to Pin Length 在端子长度适合的条件下)
 BG020 BG030 BG031 BG035 BG055
 BG060 BG075 BG080

Number of Contacts	Dimensions		
	A	B	C
2	2.54	5.58	5.08
3	5.08	8.12	7.62
4	7.62	10.66	10.16
5	10.16	13.20	12.70
6	12.70	15.74	15.24
7	15.24	18.28	17.78
8	17.78	20.82	20.32
9	20.32	23.36	22.86
10	22.86	25.90	25.40
11	25.40	28.44	27.94
12	27.94	30.98	30.48
13	30.48	33.52	33.02
14	33.02	36.06	35.56
15	35.56	38.60	38.10
16	38.10	41.14	40.64
17	40.64	43.68	43.18
18	43.18	46.22	45.72
19	45.72	48.76	48.26
20	48.26	51.30	50.80
21	50.80	53.84	53.34
22	53.34	56.38	55.88
23	55.88	58.92	58.42
24	58.42	61.46	60.96
25	60.96	64.00	63.50
26	63.50	66.54	66.04
27	66.04	69.08	68.58
28	68.58	71.62	71.12
29	71.12	74.16	73.66
30	73.66	76.70	76.20
31	76.20	79.24	78.74
32	78.74	81.78	81.28
33	81.28	84.32	83.82
34	83.82	86.86	86.36
35	86.36	89.40	88.90
36	88.90	91.94	91.44
37	91.44	94.48	93.98
38	93.98	97.02	96.52
39	96.52	99.56	99.06
40	99.06	102.10	101.60



Detail F-F Scale 2:1

Ordering Grid
BG090 - **XX** - **X** - **X** - **X** - **X**

No. of Contacts: 02 to 40

Contact Plating:
A = Gold Flash All Over (Standard)
B = Selective Gold Flash Contact Area/Tin On Tail
C = Tin All Over
G = 10μ" Gold Contact Area/Tin On Tail
I = 30μ" Gold Contact Area/Tin On Tail

Insulator Material:
N = Nylon 6T (Standard)
P = PBT
L = LCP

Packing Options:
D = Tube (Standard)
E = Tube with Cap
F = Tube with Film
G = Plastic Box

	DIM D	DIM E
A =	11.05	3.00
B =	11.05	7.35
E =	11.05	12.2
C =	13.59	4.85
L =	13.59	9.65
D =	16.13	2.30
G =	16.13	7.10
H =	18.67	4.60

Part Number BG090		Product Description 2.54mm Pitch Elevated Socket, Single Row, Through-Hole, Vertical	
Drawing Date 30th October 2006			
By CC		Tolerances (Except as Noted)	Units: Metric (mm)
Detail BG090 G PCN		Length X. ± 0.30 X.X ± 0.20 X.XX ± 0.15 X.XXX ± 0.10	Angle X° ± 5° X.X° ± 2° X.XX° ± 1° X.XXX° ± 0.5°
Revision G1		3rd Angle Projection	
Date 21/06/17			
This drawing is confidential and copyright of Global Connector Technology, Ltd (GCT). This drawing must not be copied or disclosed without written consent. E & OE			



Not to Scale	Drawn By LYH	Sheet No. 1/1
--------------	-----------------	------------------