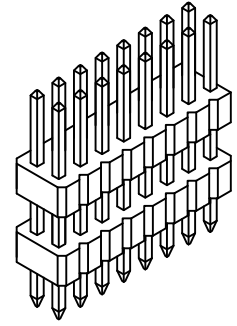
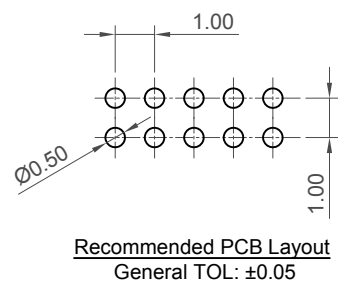
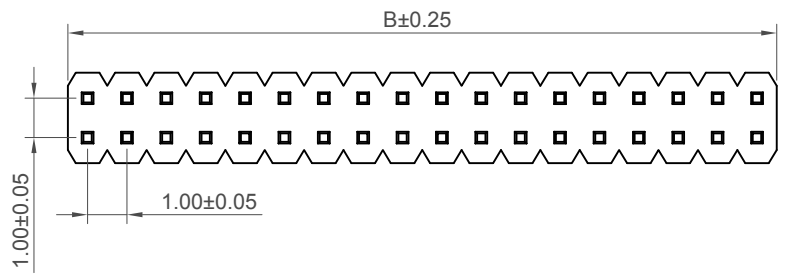


H
G
F
E
D
C
B
A



No. of Contacts	Dimensions	
	A	B
4	1.00	2.00
6	2.00	3.00
8	3.00	4.00
10	4.00	5.00
12	5.00	6.00
14	6.00	7.00
16	7.00	8.00
18	8.00	9.00
20	9.00	10.00
22	10.00	11.00
24	11.00	12.00
26	12.00	13.00
28	13.00	14.00
30	14.00	15.00
32	15.00	16.00
34	16.00	17.00
36	17.00	18.00
38	18.00	19.00
40	19.00	20.00
42	20.00	21.00
44	21.00	22.00
46	22.00	23.00
48	23.00	24.00
50	24.00	25.00
52	25.00	26.00
54	26.00	27.00
56	27.00	28.00
58	28.00	29.00
60	29.00	30.00
62	30.00	31.00
64	31.00	32.00
66	32.00	33.00
68	33.00	34.00
70	34.00	35.00
72	35.00	36.00
74	36.00	37.00
76	37.00	38.00
78	38.00	39.00
80	39.00	40.00

Specifications

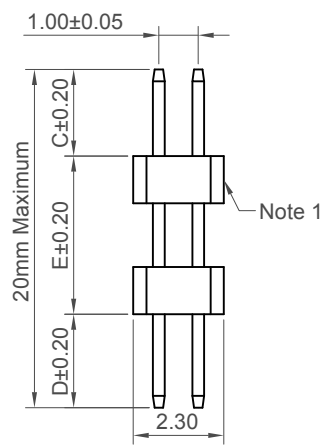
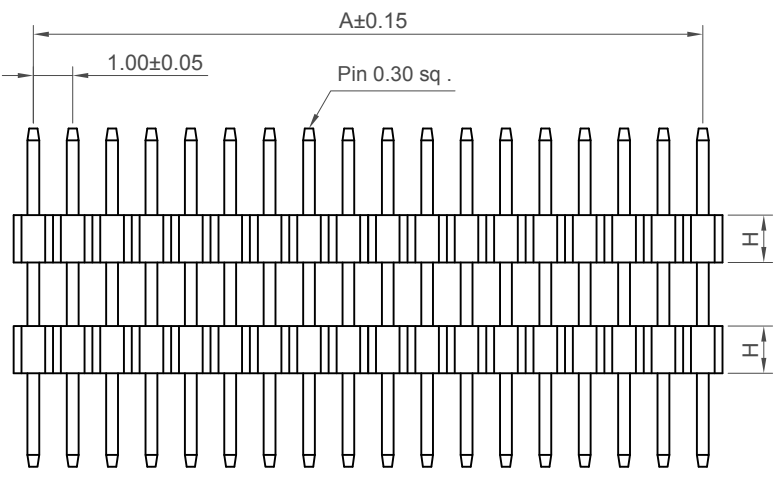
Material
 Insulator: Polymer ,LCP, UL94V-0, Black
 Contact: Copper Alloy

Plating
 See Ordering Grid

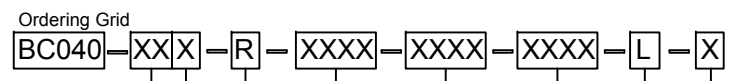
Electrical
 Current Rating: 1 Amp *per pin*
 Contact Resistance: 20 mΩ max.
 Insulating Resistance: 1000 MΩ min.
 Dielectric Withstand Voltage: 300V AC

Mechanical & Environmental
 Operating Temperature: -40°C to +105°C
 Soldering Process:
 IR Reflow: 260°C for 10 sec.
 Wave: 250°C for 5-10 sec
 Manual Solder: 350°C for 3-5 sec

Mates with (Subject to pin length)
 BC084 BC085



Note 1: The upper insulator is for pin alignment only, for load bearing, please contact GCT.



No. of Contacts
 04 to 80

Contact Plating
A = Gold Flash All Over (Standard)
 C = Tin All Over

Insulator Height 'H'
 R = 1.20mm

Dimension C (1/100mm)(Post Height)
0190 = 1.90mm (Standard)
 or specify Dimension C
 e.g. 2.50mm = 0250
 (Maximum 0400=4.00mm)
 (Minimum 0050=0.50mm)

Dimension D (1/100mm)
 (Tail Length)
0190 = 1.90mm (Standard)
 or specify Dimension D
 e.g. 2.50mm = 0250
 (Maximum 0400=4.00mm)
 (Minimum 0050=0.50mm)

Packing Options
G = Plastic Box (Standard)
 D = Tube
 E = Tube with Cap

Insulator Material
 L = LCP

Dimension E (1/100mm)
 (Stacking Height)
0255 = 2.55mm (Standard)
 or specify Dimension E
 e.g. 4.50mm = 0450
 (Maximum 1200=12.00mm)

Part Number BC040		Product Description 1.0mm Pitch Elevated Pin Header, Dual Row, Through-Hole, Vertical	
Drawing Date 20th May 2008			
By	CC	Tolerances (Except as Noted)	Units: Metric (mm)
Detail	BC040 D PCN	Length X. ± 0.30 XX ± 0.20 XXX ± 0.15 XXX ± 0.10	Angle X.° ± 5° XX° ± 3° XXX° ± 2° XXX° ± 1°
Revision	D2	3rd Angle Projection	
Date	04/06/20		



This drawing is confidential and copyright of Global Connector Technology, Ltd (GCT). This drawing must not be copied or disclosed without written consent. E & OE



Not to Scale
 Drawn By ASE
 Sheet No. 1/1