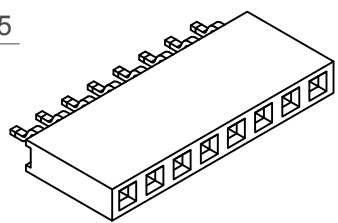
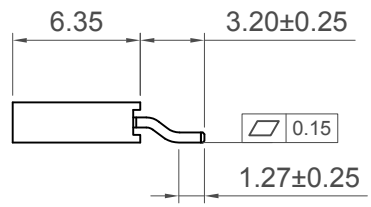
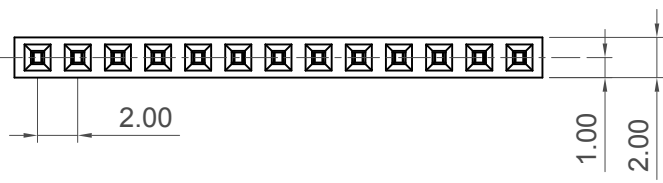


**Recommended PCB Layout**  
General Tolerance:  $\pm 0.05\text{mm}$   
Solder Area



No. of Contacts	Dimensions	
	A	B
2	2.00	4.30
3	4.00	6.30
4	6.00	8.30
5	8.00	10.30
6	10.00	12.30
7	12.00	14.30
8	14.00	16.30
9	16.00	18.30
10	18.00	20.30
11	20.00	22.30
12	22.00	24.30
13	24.00	26.30
14	26.00	28.30
15	28.00	30.30
16	30.00	32.30
17	32.00	34.30
18	34.00	36.30
19	36.00	38.30
20	38.00	40.30

No. of Contacts	Dimensions	
	A	B
21	40.00	42.30
22	42.00	44.30
23	44.00	46.30
24	46.00	48.30
25	48.00	50.30
26	50.00	52.30
27	52.00	54.30
28	54.00	56.30
29	56.00	58.30
30	58.00	60.30
31	60.00	62.30
32	62.00	64.30
33	64.00	66.30
34	66.00	68.30
35	68.00	70.30
36	70.00	72.30
37	72.00	74.30
38	74.00	76.30
39	76.00	78.30
40	78.00	80.30

**Specifications**

**Material**

Insulator: Polymer, LCP, UL 94V-0  
Contact: Phosphor Bronze

**Plating**

See Ordering Grid

**Electrical**

Current Rating: 2 Amp per pin  
Contact Resistance: 20 mΩ max.  
Insulation Resistance: 1000 MΩ min.  
Dielectric Withstand Voltage: 500 V AC

**Mechanical & Environmental**

Operating Temperature:  $-55^{\circ}\text{C}$  to  $+105^{\circ}\text{C}$

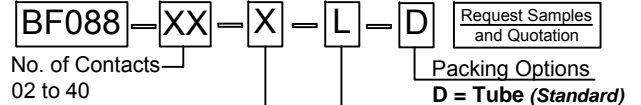
**Soldering process:**

IR Reflow:  $260^{\circ}\text{C}$  for 10 sec.  
Wave:  $250^{\circ}\text{C}$  for 5-10 sec.  
Manual solder:  $350^{\circ}\text{C}$  for 3-5 sec

**Mates with (subject to pin length):**

BF020 BF025 BF040 BF130  
Perfect Planar Mating (subject to pin length)  
BF021 BF035 BF036

**Ordering Grid**



**Contact Plating**

A = Gold Flash All Over (Standard)  
B = Selective Gold Flash Contact Area/Tin On Tail  
C = Tin All Over  
G =  $10\mu$  Gold Contact Area/Tin On Tail  
I =  $30\mu$  Gold Contact Area/Tin On Tail

Part Number		Product Description	
BF088		2.00mm Pitch Socket	
Drawing Date		Single Row, SMT, Horizontal	
5th April 2012			
By	CC	Tolerances (Except as Noted)	Units:
Detail	Drawing Release	Length: X. ± 0.30	Metric (mm)
Revision	A3	Angle: X.X ± 0.25	
Date	08/11/17	X.XX ± 0.15	
		X.XXX ± 0.10	



This drawing is confidential and copyright of Global Connector Technology, Ltd (GCT). This drawing must not be copied or disclosed without written consent. E & OE



Not to Scale	Drawn By ASE	Sheet No. 1/1
--------------	--------------	---------------