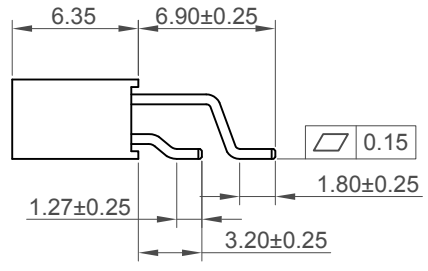
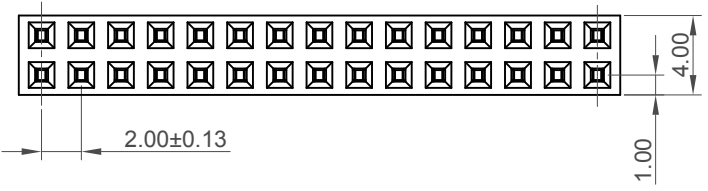
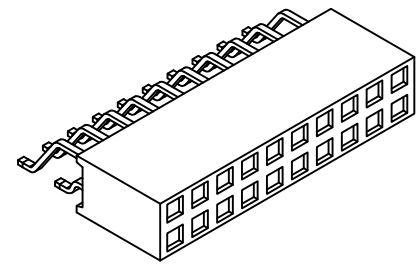
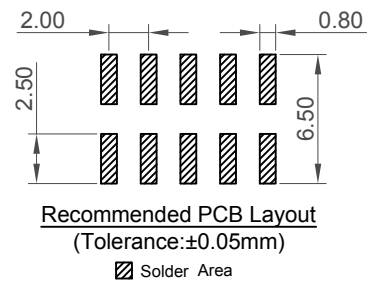
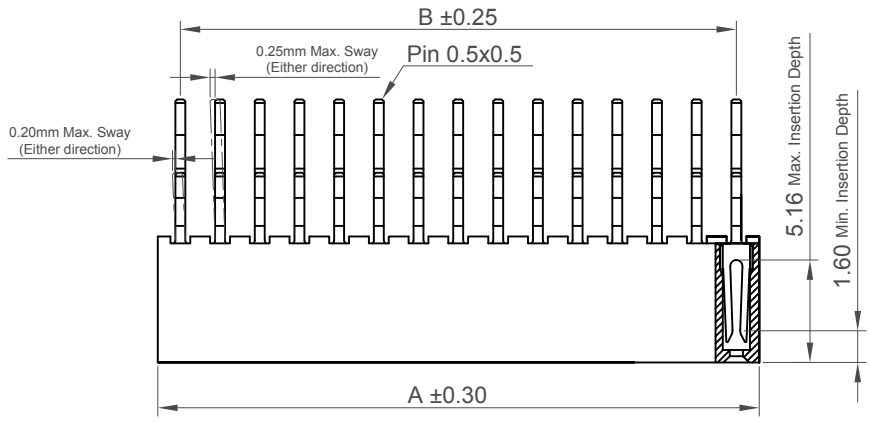


H
G
F
E
D
C
B
A



Contacts	Dimensions	
	A	B
4	4.3	2
6	6.3	4
8	8.3	6
10	10.3	8
12	12.3	10
14	14.3	12
16	16.3	14
18	18.3	16
20	20.3	18
22	22.3	20
24	24.3	22
26	26.3	24
28	28.3	26
30	30.3	28
32	32.3	30
34	34.3	32
36	36.3	34
38	38.3	36
40	40.3	38
42	42.3	40
44	44.3	42
46	46.3	44
48	48.3	46
50	50.3	48
52	52.3	50
54	54.3	52
56	56.3	54
58	58.3	56
60	60.3	58
62	62.3	60
64	64.3	62
66	66.3	64
68	68.3	66
70	70.3	68
72	72.3	70
74	74.3	72
76	76.3	74
78	78.3	76
80	80.3	78

Specifications 规格

Material 物料
 Contact 端子物料: Phosphor Bronze
 Insulator 绝缘体物料: Polyamide, 聚酰胺
 Nylon 6T, UL 94V-0

Electrical 电气
 Current Rating 电流额定值: 2 Amp Per Pin
 Insulation Resistance 绝缘电阻值: 1000 MΩ min
 Contact Resistance 接触电阻值: 20 mΩ max.
 Dielectric Withstand Voltage 耐电压: AC 500 V

Mechanical & Environmental 机械 & 环境
 Operating Temperature 工作温度: -40°C to +105°C

Soldering Process 可焊性:
 Nylon 6T
 IR Reflow 回流焊: 260°C for 10 sec.
 Manual Solder 人工焊接: 350°C for 3-5 sec

Mates with 配套之公头
 (Subject to pin length 在端子长度适合的条件下):
 BF030 BF045 BF050 BF055
 Perfect Planar Mating with:
 BF060 BF135

Ordering Grid
BF112 - **XX** - **X** - **N** - **X** Request Samples and Quotation

No. of Contacts
 04 to 80

Packing
D = Tube (Standard)
A = Tape and Reel
G = Box

Insulator Material
N = Nylon 6T

Plating Options
A = Gold Flash All Over (Standard)
B = Selective Gold Flash Contact Area/ Tin On Tail
C = Tin All Over

Part Number		Product Description	
BF112		2.00mm Pitch Socket, Dual Row, Surface Mount, Horizontal	
Drawing Date		23rd April 2014	
By	CC	Tolerances (Except as Noted)	Units:
Detail	Drawing Release	Length: X. ± 0.30 X.X ± 0.25 X.XX ± 0.15 X.XXX ± 0.10	Metric (mm)
Revision	A1	Angle: X° ± 5° X.X° ± 3° X.XX° ± 2° X.XXX° ± 1°	
Date	24/03/17		



This drawing is confidential and copyright of Global Connector Technology, Ltd (GCT). This drawing must not be copied or disclosed without written consent. E & OE

GCT
 Global Connector Technology
 www.gct.co

Not to Scale	Drawn By AJO	Sheet No. 1/1
--------------	--------------	---------------