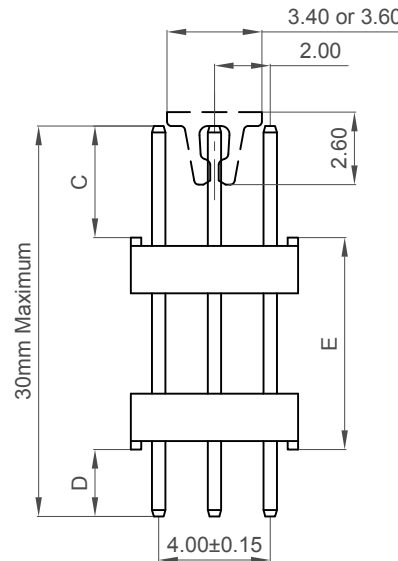
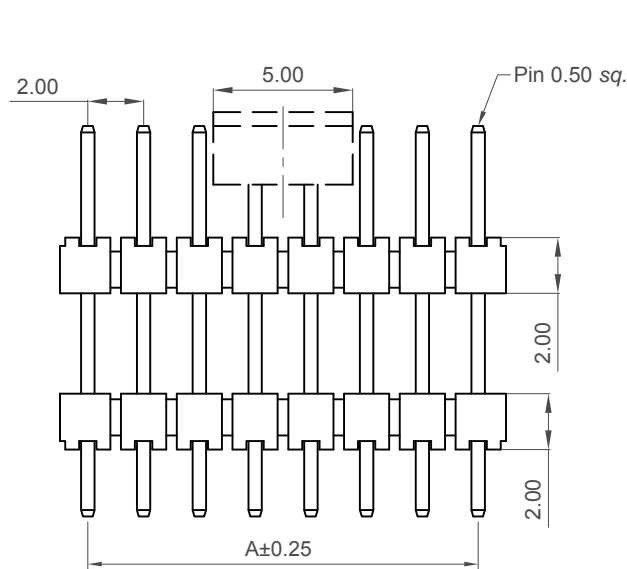
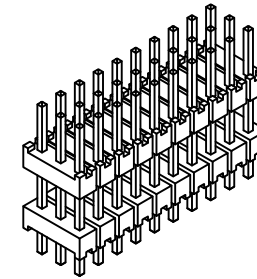


**Recommended PCB Layout**



**Specifications**

**Material**  
 Contact : Copper Alloy  
 Insulator : Polymer , LCP , UL 94-V0

**Plating**  
 See Ordering Grid

**Electrical**  
 Current Rating: 2 Amp Per Pin  
 Insulation Resistance: 1000 MΩ min  
 Contact Resistance: 20 mΩ max.  
 Dielectric Withstand Voltage: AC 500 V

**Mechanical & Environmental**  
 Operating Temperature: -40°C to +105°C

**Soldering Process:**  
 LCP (Standard) -  
 IR Reflow: 260°C for 10 sec.  
 Wave: 250°C for 5-10 sec  
 Manual Solder: 350°C for 3-5 sec

**Mates with (Subject to pin length)**  
 BF155 BF160

No. of Contacts	Dimensions	
	A	B
6	2.00	4.00
9	4.00	6.00
12	6.00	8.00
15	8.00	10.00
18	10.00	12.00
21	12.00	14.00
24	14.00	16.00
27	16.00	18.00
30	18.00	20.00
33	20.00	22.00
36	22.00	24.00
39	24.00	26.00
42	26.00	28.00
45	28.00	30.00
48	30.00	32.00
51	32.00	34.00
54	34.00	36.00
57	36.00	38.00
60	38.00	40.00
63	40.00	42.00
66	42.00	44.00
69	44.00	46.00
72	46.00	48.00
75	48.00	50.00
78	50.00	52.00
81	52.00	54.00
84	54.00	56.00
87	56.00	58.00
90	58.00	60.00
93	60.00	62.00
96	62.00	64.00
99	64.00	66.00
102	66.00	68.00
105	68.00	70.00
108	70.00	72.00
111	72.00	74.00
114	74.00	76.00
117	76.00	78.00
120	78.00	80.00

**Ordering Grid**  
**BF170-XXX-X-XXXX-XXXX-XXXX-X-X**

**No. of Contacts**  
 06 to 120

**Contact Plating**  
**A = Gold Flash All Over (Standard)**  
 B = Selective Gold Flash Contact Area/  
 Tin On Tail  
 C = Tin All Over  
 G = 10µ" Gold Contact Area/Tin On Tail  
 I = 30µ" Gold Contact Area/Tin On Tail

**Dimension C (1/100mm) (Post Height)**  
**0400 = 4.00mm(Standard)**  
 Or specify Dimension C (eg 0250 = 2.50mm)  
 (Maximum 0800 = 8.00mm)  
 (Minimum 0050 = 0.50mm)

**Dimension E (1/100mm) (Stack Height)**  
**0760 = 7.60mm (Standard)**  
 Or specify Dimension E (eg 0250 = 2.50mm)  
 (Maximum 2000 = 20.00mm)

**Dimension D (1/100mm) (Tail Length)**  
**0240 = 2.40mm (Standard)**  
 Or specify Dimension D (eg 0250 = 2.50mm)  
 (Maximum 0800 = 8.00mm)  
 (Minimum 0050 = 0.50mm)

**Packing Options**  
 G = Plastic Box (Standard)  
 B = Tape & Reel with Cap  
 D = Tube  
 E = Tube with Cap

**Insulator Material**  
 L = LCP (Standard)

Part Number		Product Description	
BF170		2.00mm Pitch Elevated Pin Header, Triple Row, Through Hole, Vertical	
Drawing Date		8th April 2007	
By	CC	Tolerances (Except as Noted)	Units:
Detail	Drawing Release	Length X. ± 0.30 X.X ± 0.25 X.XX ± 0.15 X.XXX ± 0.10	Metric (mm)
Revision	A2	Angle X° ± 5° X.X° ± 3° X.XX° ± 1° X.XXX° ± 0.5°	3rd Angle Projection
Date	11/05/20		
This drawing is confidential and copyright of Global Connector Technology, Ltd (GCT). This drawing must not be copied or disclosed without written consent. E & OE			

**GCT**  
 www.gct.co

Not to Scale | Drawn By RD | Sheet No. 1/1