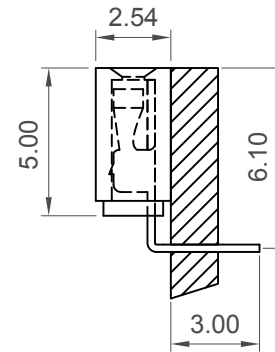
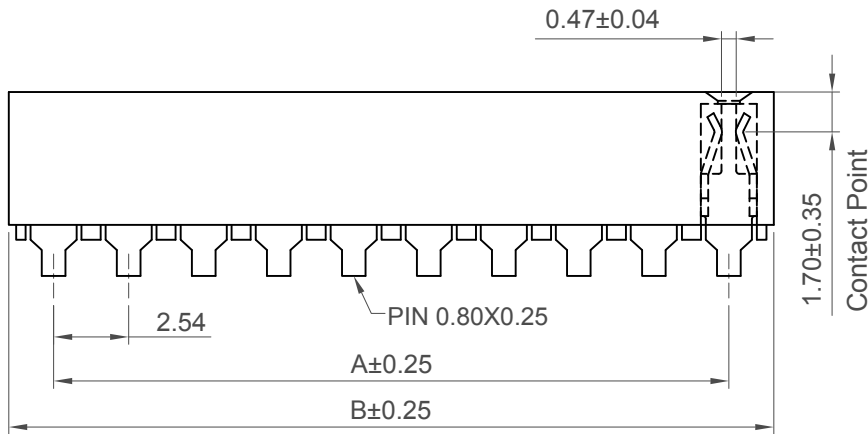
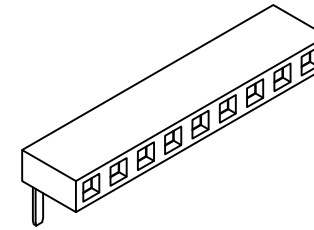


Recommended PCB Layout



Specifications 规格

Material 物料

Insulator 绝缘体:

Standard 标准: Polyamide 聚酰胺, Nylon 6T, UL94 V-0

Options 可选: Polymer 聚合物, LCP, UL 94 V-0

or Polyester 聚酯, PBT, UL94 V-0

Contact 端子: Copper Alloy

Plating 电镀

Contact 接触: See Ordering Grid

Electrical 电气

Current Rating 电流额定值: 3 Amp Per Pin

Contact Resistance 接触电阻值: 20 mΩ max.

Insulation Resistance 绝缘电阻值: 1000 MΩ min.

Dielectric Withstand Voltage 耐电压: 600 V AC

Mechanical & Environmental 机械 & 环境

Operating Temperature 工作温度: -40°C to +105°C

Soldering Process 可焊性

Nylon 6T (Standard 标准物料)

IR Reflow 回流焊: 260°C for 10 sec.

Wave 波峰焊: 230°C for 5-10 sec.

Manual Solder 人工焊接: 350°C for 3-5 sec

LCP (Option 可选物料)

IR Reflow 回流焊: 260°C for 10 sec.

Wave 波峰焊: 250°C for 5-10 sec.

Manual Solder 人工焊接: 350°C for 3-5 sec

PBT (Option 可选物料) -

Manual Solder 人工焊接: 330°C for 3-5 sec.

(Not suitable for hi-temp process 不适合高温制程)

Mates with 配套之公头

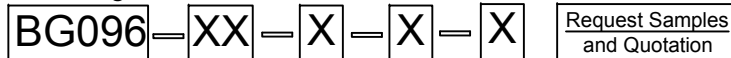
(Subject to Pin Length 在端子长度适合的条件下)

BG020 BG030 BG031 BG035

BG055 BG060 BG075 BG080

Number of Contacts	Dimensions	
	A	B
2	2.54	5.58
3	5.08	8.12
4	7.62	10.66
5	10.16	13.20
6	12.70	15.74
7	15.24	18.28
8	17.78	20.82
9	20.32	23.36
10	22.86	25.90
11	25.40	28.44
12	27.94	30.98
13	30.48	33.52
14	33.02	36.06
15	35.56	38.60
16	38.10	41.14
17	40.64	43.68
18	43.18	46.22
19	45.72	48.76
20	48.26	51.30
21	50.80	53.84
22	53.34	56.38
23	55.88	58.92
24	58.42	61.46
25	60.96	64.00
26	63.50	66.54
27	66.04	69.08
28	68.58	71.62
29	71.12	74.16
30	73.66	76.70
31	76.20	79.24
32	78.74	81.78
33	81.28	84.32
34	83.82	86.86
35	86.36	89.40
36	88.90	91.94
37	91.44	94.48
38	93.98	97.02
39	96.52	99.56
40	99.06	102.10

Ordering Grid



No. of Contacts
02 to 40

Packing Options
D = Tube (Standard)
G = Plastic Box

Contact Plating

A = Gold Flash All Over (Standard)
B = Selective Gold Flash Contact Area/Tin On Tail
C = Tin All Over
G = 10μ" Gold Contact Area/Tin On Tail
I = 30μ" Gold Contact Area/Tin On Tail

Insulator Material
N = Nylon 6T (Standard)
P = PBT
L = LCP

Part Number		Product Description	
BG096		2.54mm Pitch Socket, Single Row, Through-Hole, Horizontal, Dual Beam Folded Contacts	
Drawing Date		10th March 2009	
By	CC	Tolerances (Except as Noted)	Units:
Detail	BG096 D PCN	Length X. ± 0.30 X.X ± 0.20 X.XX ± 0.15 X.XXX ± 0.10	Metric (mm)
Revision	D1	Angle X° ± 5° X.X° ± 2° X.XX° ± 1° X.XXX° ± 0.5°	3rd Angle Projection
Date	21/06/17		



This drawing is confidential and copyright of Global Connector Technology, Ltd (GCT). This drawing must not be copied or disclosed without written consent. E & OE



Not to Scale	Drawn By LYH	Sheet No. 1/1
--------------	--------------	---------------