

**Recommended PCB Layout**  
General Tolerance: ±0.05

**Specifications**

**Material**

Insulator: Polymer, LCP, Natural, UL94V-0  
Contact: Copper Alloy

**Plating**

Underplating: 30µ"-50µ" Nickel all over  
Contact Area: See ordering grid

**Electrical**

Current Rating: 3A per pin  
Contact Resistance: 20 mΩ max.  
Insulating Resistance: 1000 MΩ min.  
Dielectric Withstand Voltage: 500V AC

**Mechanical & Environmental**

Operating Temperature: -40°C to +105°C

**Soldering Process:**

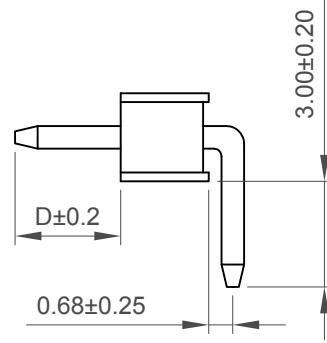
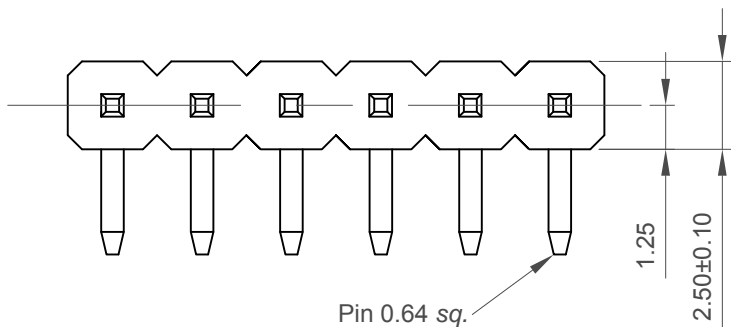
Wave: 250°C for 5-10 secs  
Manual Solder: 350°C for 3-5 secs

**Mates with**

(Subject to pin length):  
Use BG302 for perfect horizontal mating.  
(Standard mating pin length 3.00mm)

**Notes:**

Standard black version of BG303 is BG075



Ordering Grid  
**BG303** - **XX** - **X** - **0300** - **L** - **X** Request Samples and Quotation

No. of Contacts  
02 to 06  
Contact Plating  
A = Gold Flash All Over  
(Other plating options available on request)

Packing Options  
**G = Plastic Box (Standard)**  
D = Tube  
Insulator Material  
L = LCP (Natural)

Dimension D (Post Length)  
**0300 = 3.00mm (Standard)**  
Or Specify Dimension D  
eg 0250 = 2.50mm  
(Maximum 3200=32.00mm)  
(Minimum 0100=1.00mm)

CONTACTS	DIMENSIONS	
	A	B
2	5.08	2.54
3	7.62	5.08
4	10.16	7.62
5	12.70	10.16
6	15.24	12.70

Part Number		Product Description	
BG303		2.54mm Pitch Pin Header, Single Row, Through-hole, Horizontal, Natural LCP	
Drawing Date		7th December 2011	
By	CC	Tolerances (Except as Noted)	Units:
Detail	Drawing Release	Length	Metric (mm)
Revision	A2	Angle	
Date	01/11/17	X.X ± 0.30	
		X.XX ± 0.20	



This drawing is confidential and copyright of Global Connector Technology, Ltd (GCT). This drawing must not be copied or disclosed without written consent. E & OE



Not to Scale	Drawn By CM	Sheet No. 1/1
--------------	-------------	---------------