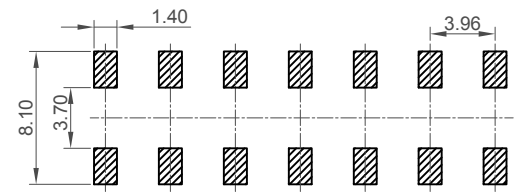


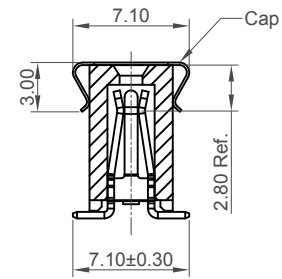
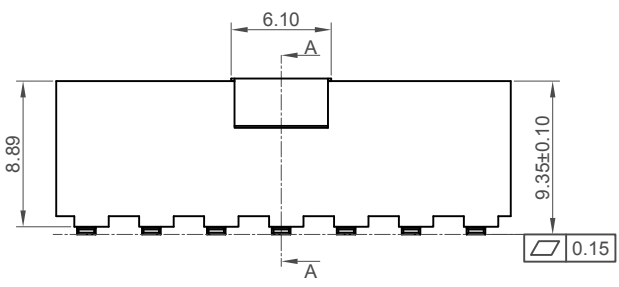
**Recommended PCB Layout**  
Bottom Entry General Tolerance ±0.05



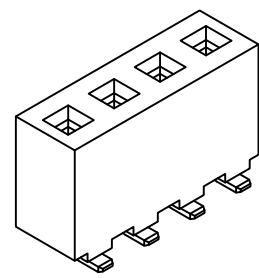
**Recommended PCB Layout**  
Top Entry General Tolerance ±0.05

▨ Solder Area

Number of Contacts	Dimensions	
	A	B
2	3.96	7.92
3	7.92	11.88
4	11.88	15.84
5	15.84	19.80
6	19.80	23.76
7	23.76	27.72
8	27.72	31.68
9	31.68	35.64
10	35.64	39.60
11	39.60	43.56
12	43.56	47.52
13	47.52	51.48
14	51.48	55.44
15	55.44	59.40
16	59.40	63.36
17	63.36	67.32
18	67.32	71.28



Section A-A



**Specifications 规格**

**Material 物料**

Insulator 绝缘体: LCP, UL94V-0  
Contact 端子: Phosphor Bronze

**Plating 电镀**

Contact 接触: Tin All Over  
Underplating 底层电镀: Nickel all over

**Electrical 电气**

Current Rating 电流额定值: 7.9 Amp Per Pin  
Contact Resistance 接触电阻值: 30 mΩ max.  
Insulation Resistance 绝缘电阻值: 1000 MΩ min.  
Dielectric Withstand Voltage 耐电压: 1000 V AC

**Mechanical & Environmental 机械 & 环境**

Operating Temperature 工作温度: -40°C to +105°C  
Soldering Process 可焊性  
IR Reflow 回流焊: 260°C for 10 sec.  
Manual Solder 人工焊接: 350°C for 3-5 sec

**Mates with 配套之公头**

(Subject to Pin Length 在端子长度适合的条件下)  
BH010

For bottom entry applications, stringent soldering control & pin alignment are required as lead to pad misalignment could cause incorrect mating.

**Ordering Grid**



No. of Contacts  
02 to 18

Contact Plating  
C= Tin All Over

**Packing Options**

E = Tube with Cap (Standard)  
D = Tube

Part Number		Product Description	
BH015		3.96mm Pitch Socket, Single Row, Surface Mount, Vertical, Dual Entry	
Drawing Date		26th May 2017	
By	CC	Tolerances (Except as Noted)	Units:
Detail	Drawing Release	Length: X. ± 0.30 X.X ± 0.25 X.XX ± 0.15 X.XXX ± 0.10	Metric (mm)
Revision	A	Angle: X.° ± 5° X.X° ± 3° X.XX° ± 2° X.XXX° ± 1°	RoHS COMPLIANT 2011/65/EU Deca-BDE
Date	05/07/17	3rd Angle Projection	This drawing is confidential and copyright of Global Connector Technology, Ltd (GCT). This drawing must not be copied or disclosed without written consent. E & OE



Not to Scale	Drawn By CC	Sheet No. 1/1
--------------	-------------	---------------