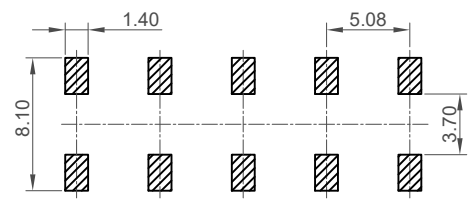
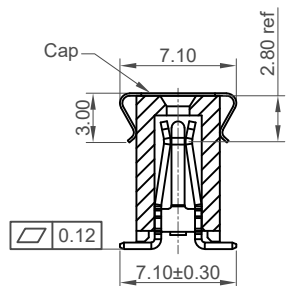
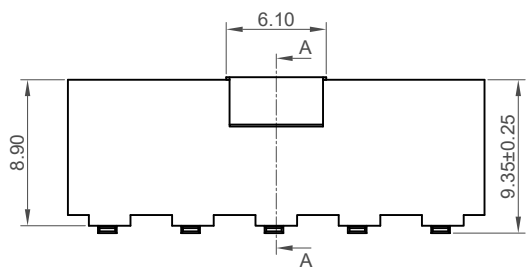


Recommended PCB Layout
Bottom Entry General Tolerance ± 0.05
Solder Area

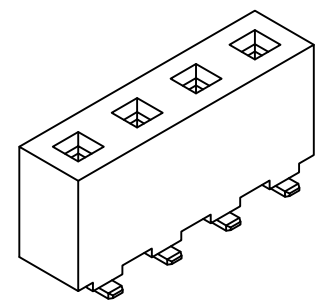


Recommended PCB Layout
Top Entry General Tolerance ± 0.05
Solder Area

Number of Contacts	Dimensions	
	A	B
2	5.08	10.16
3	10.16	15.24
4	15.24	20.32
5	20.32	25.40
6	25.40	30.48
7	30.48	35.56
8	35.56	40.64
9	40.64	45.72
10	45.72	50.80
11	50.80	55.88
12	55.88	60.96
13	60.96	66.04
14	66.04	71.12
15	71.12	76.20



Section A-A



Specifications

Material
Insulator: LCP, UL94V-0
Contact: Phosphor Bronze

Plating
Contact: Tin All Over
Underplating: Nickel all over

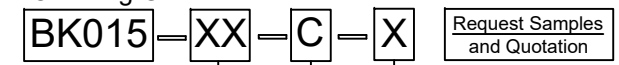
Electrical
Current Rating: 7.9 Amp Per Pin
Contact Resistance: 30 mΩ max.
Insulation Resistance: 1500 MΩ min.
Dielectric Withstand Voltage: 1500 V AC

Mechanical & Environmental
Operating Temperature: -40°C to +105°C
Soldering Process
IR Reflow: 260°C for 10 sec.
Manual Solder: 350°C for 3-5 sec

Mates with
(Subject to Pin Length)
BK010 BK020

For bottom entry applications, stringent soldering control & pin alignment are required as lead to pad misalignment could cause incorrect mating.

Ordering Grid



No. of Contacts
02 to 15

Contact Plating
C= Tin All Over

Packing Options
E = Tube with Cap (Standard)
B = Tape and Reel with Cap
D = Tube

Part Number BK015		Product Description 5,08mm Pitch Socket, Single Row, Surface Mount, Vertical, Dual Entry			
Drawing Date 26th May 2017					
By	CC	Tolerances (Except as Noted)		Units:	This drawing is confidential and copyright of Global Connector Technology, Ltd (GCT). This drawing must not be copied or disclosed without written consent. E & OE
Detail	Drawing Release	Length	Angle	Metric (mm)	
Revision	A1	X. ± 0.30	X.° ± 5°		
Date	09/09/21	X.X ± 0.25	X.X° ± 3°		
		X.XX ± 0.15	X.XX° ± 2°		
		X.XXX ± 0.10	X.XXX° ± 1°		



Not to Scale	Drawn By CC	Sheet No. 1/1
--------------	----------------	------------------