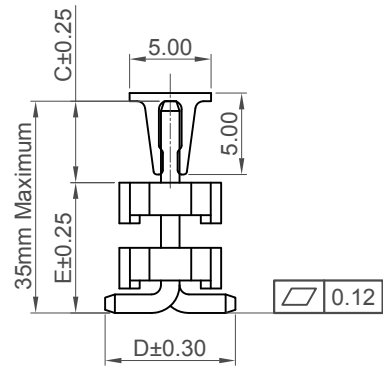
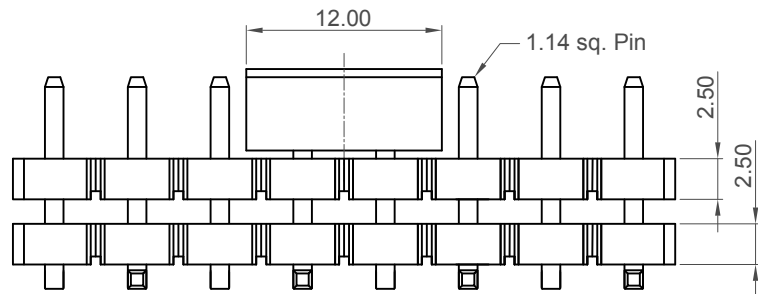


Number of Contacts	Dimensions	
	A	B
2	5.08	10.16
3	10.16	15.24
4	15.24	20.32
5	20.32	25.40
6	25.40	30.48
7	30.48	35.56
8	35.56	40.64
9	40.64	45.72
10	45.72	50.80
11	50.80	55.88
12	55.88	60.96
13	60.96	66.04
14	66.04	71.12
15	71.12	76.20



Specifications

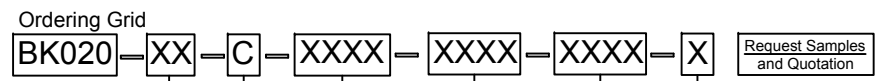
Material
 Insulator: LCP, UL94V-0
 Contact: Brass

Plating
 Contact: Tin All Over
 Underplating: Nickel all over

Electrical
 Current Rating: 7.9 Amp Per Pin
 Contact Resistance: 30 mΩ max.
 Insulation Resistance: 1500 MΩ min.
 Dielectric Withstand Voltage: 1500 V AC

Mechanical & Environmental
 Operating Temperature: -40°C to +105°C
 Soldering Process
 IR Reflow: 260°C for 10 sec.
 Manual Solder: 350°C for 3-5 sec

Mates with (Subject to Pin Length)
 BK015



No. of Contacts
02 to 15

Contact Plating
C= Tin All Over

Dimension C (1/100mm) (Post Height)
0500 = 5.00mm (Standard)
 Or specify Custom Post Height
 (Maximum 1500=15.00mm)
 (Minimum 0050=0.50mm)

Packing Options
E = Tube with Cap (Standard)
 (Available from 3 contacts and above)
 D = Tube (Available from 3 contacts and above)
 G = Box (Only available in 2 contacts)

Dimension E (1/100mm) (PCB to Top of Insulator)
0800 = 8.00mm (Standard)
 Or specify custom dimension
 Maximum 2000=20.00mm
 Minimum 0620=6.20mm

Dimension D (1/100mm) (Footprint Width)
0800 = 8.00mm (Standard)
 Or specify Custom Footprint Width (Tooling charge may apply)

Part Number		Product Description	
BK020		5.08mm Pitch Elevated Pin Header, Single Row, Surface Mount, Vertical	
Drawing Date		10th August 2017	
By	CC	Tolerances (Except as Noted)	Units:
Detail	Drawing Release	Length: X. ± 0.30 X.X ± 0.25 X.XX ± 0.15 X.XXX ± 0.10	Metric (mm)
Revision	A	Angle: X.° ± 5° X.X° ± 3° X.XX° ± 2° X.XXX° ± 1°	3rd Angle Projection
Date	16/08/17		



This drawing is confidential and copyright of Global Connector Technology, Ltd (GCT). This drawing must not be copied or disclosed without written consent. E & OE



Not to Scale	Drawn By CC	Sheet No. 1/1
--------------	----------------	------------------