

Recommended PCB Layout

Solder Area

No. of Contacts	Dimensions		
	A	B	C
4	2.0	4.6	/
6	4.0	6.6	2.0
8	6.0	8.6	4.0
10	8.0	10.6	6.0
12	10.0	12.6	8.0
14	12.0	14.6	10.0
16	14.0	16.6	12.0
18	16.0	18.6	14.0
20	18.0	20.6	16.0
22	20.0	22.6	18.0
24	22.0	24.6	20.0
26	24.0	26.6	22.0
28	26.0	28.6	24.0
30	28.0	30.6	26.0
32	30.0	32.6	28.0
34	32.0	34.6	30.0
36	34.0	36.6	32.0
38	36.0	38.6	34.0
40	38.0	40.6	36.0
42	40.0	42.6	38.0
44	42.0	44.6	40.0
46	44.0	46.6	42.0
48	46.0	48.6	44.0
50	48.0	50.6	46.0
52	50.0	52.6	48.0
54	52.0	54.6	50.0
56	54.0	56.6	52.0
58	56.0	58.6	54.0
60	58.0	60.6	56.0
62	60.0	62.6	58.0
64	62.0	64.6	60.0
66	64.0	66.6	62.0
68	66.0	68.6	64.0
70	68.0	70.6	66.0
72	70.0	72.6	68.0
74	72.0	74.6	70.0
76	74.0	76.6	72.0
78	76.0	78.6	74.0
80	78.0	80.6	76.0

Specifications

Material
 Contact: Phosphor Bronze
 Insulator:
 Standard: Polyamide, Nylon 6T, UL 94V-0
 Options: Polymer, LCP, UL 94V-0

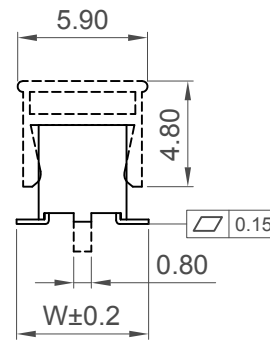
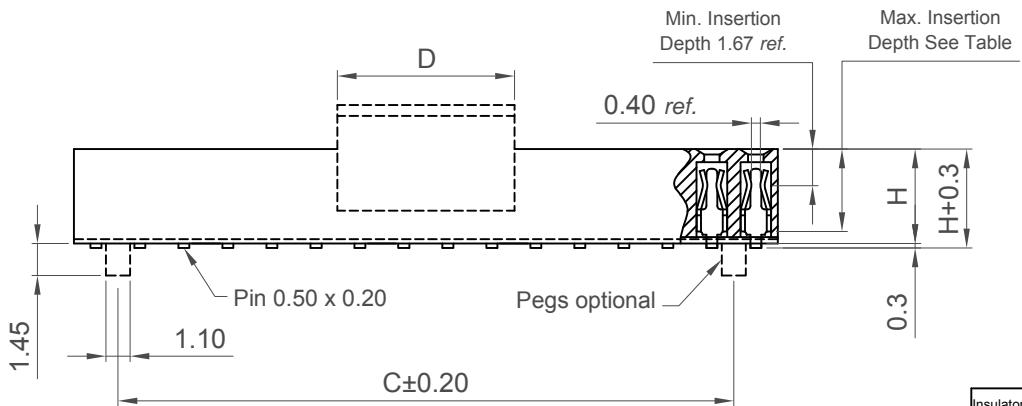
Plating
 See Ordering Grid

Electrical
 Current Rating: 2 Amp Per Pin
 Insulation Resistance: 1000 MΩ min
 Contact Resistance: 20 mΩ max.
 Dielectric Withstand Voltage: AC 500 V

Mechanical & Environmental
 Operating Temperature: -40°C to +105°C

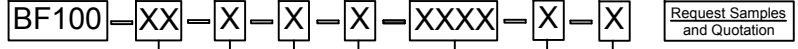
Soldering Process:
 Nylon 6T (Standard) -
 IR Reflow: 260°C for 10 sec.
 Wave: 230°C for 5-10 sec.
 Manual Solder: 350°C for 3-5 sec
 LCP (Option) -
 IR Reflow: 260°C for 10 sec.
 Wave: 250°C for 5-10 sec.
 Manual Solder: 350°C for 3-5 sec

Mates with (Subject to pin length):
 BF030 BF045 BF050 BF055
 BF060 BF135 BF140 BF145



Insulator Height H	No. of Contacts	Dimension D	Max. Insertion Depth
4.30	04 ~ 16	4	4.50
	18 ~ 80	8.05	
4.00	04 ~ 16	4	4.30
	18 ~ 80	8.05	

Ordering Grid



No. of Contacts
04 to 80

Packing Options
C = Tape and Reel with Film (Standard)
B = Tape and Reel with Cap
D = Tube (available from 6 contacts)
E = Tube with Cap (available from 6 contacts)
F = Tube with Film (available from 6 contacts)

Insulator Material
N = Nylon 6T (Standard)
L = LCP

Dimension W - Footprint Width (1/100mm)
'H' = 4.00mm: Standard - 6.25mm = 0625
 Alternative - 5.00mm = 0500
'H' = 4.30mm: Standard - 6.40mm = 0640
 Alternative - 5.60mm = 0560
 - 6.25mm = 0625

Contact Plating
A = Gold Flash All Over (Standard)
B = Selective Gold Flash Contact Area/ Tin On Tail
C = Tin All Over
G = 10µ" Gold Contact Area/Tin On Tail
I = 30µ" Gold Contact Area/Tin On Tail

Insulator Height 'H'
C = 4.00mm (Standard)
D = 4.30mm

Locating Peg
 0 = No Peg
 1 = With Peg

Part Number BF100		Product Description 2.00mm Pitch Socket, Dual Row, Surface Mount, 4.3mm or 4.6mm Profile	
Drawing Date 31st October 2007			
By	CC	Tolerances (Except as Noted)	Units: Metric (mm)
Detail	BF100 H PCN	Length X. ± 0.30 X.X ± 0.25 X.XX ± 0.15 X.XXX ± 0.10	Angle X° ± 5° X.X° ± 3° X.XX° ± 2° X.XXX° ± 1°
Revision	H2	3rd Angle Projection	
Date	09/11/17		



This drawing is confidential and copyright of Global Connector Technology, Ltd (GCT). This drawing must not be copied or disclosed without written consent. E & OE



Not to Scale	Drawn By LYH	Sheet No. 1/1
--------------	-----------------	------------------