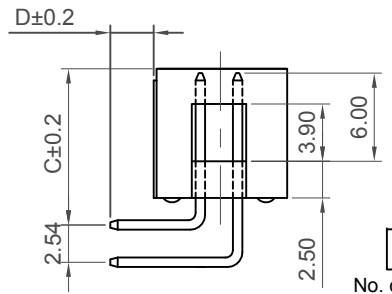


Recommended PCB Layout



Number of Contacts	Dimensions	
	A	B
6	5.08	15.27
8	7.62	17.81
10	10.16	20.35
12	12.70	22.89
14	15.24	25.43
16	17.78	27.97
18	20.32	30.51
20	22.86	33.05
22	25.40	35.59
24	27.94	38.13
26	30.48	40.67
28	33.02	43.21
30	35.56	45.75
32	38.10	48.29
34	40.64	50.83

Number of Contacts	Dimensions	
	A	B
36	43.18	53.37
38	45.72	55.91
40	48.26	58.45
42	50.80	60.99
44	53.34	63.53
46	55.88	66.07
48	58.42	68.61
50	60.96	71.15
52	63.50	73.69
54	66.04	76.23
56	68.58	78.77
58	71.12	81.31
60	73.66	83.85
62	76.20	86.39
64	78.74	88.93

Specifications

Insulator:
 Standard: Polyamide, Nylon 6T, UL94V-0
 Options: Polymer, LCP, UL94V-0
 Polyester, PBT, UL94V-0
Contact: Copper Alloy

Plating
Contact: See Ordering Grid

Electrical
 Current Rating: 3 Amp per pin
 Contact Resistance: 20 mΩ max.
 Insulation Resistance: 1000 MΩ min.
 Dielectric Withstand Voltage: 600 V AC

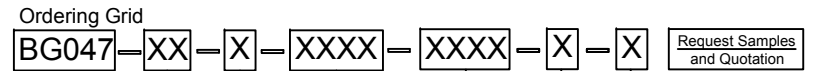
Mechanical & Environmental
 Operating Temperature: -40°C to +105°C

Soldering Process
 Nylon 6T (Standard)
 IR Reflow: 260°C for 10 sec.
 Wave: 230°C for 5-10 sec.
 Manual Solder: 350°C for 3-5sec
 LCP (Option)
 IR Reflow: 260°C for 10 sec.
 Wave: 250°C for 5-10 sec
 Manual Solder: 350°C for 3-5 sec
 PBT (Option)
 Manual Solder: 330°C for 3-5sec
 (Not suitable for hi-temp process)

Mates with (Subject to Pin Length)
 BG215 BG216 - Allowing perfect polarization
 Non-Polarised mating connections available - contact GCT for details

Contact Plating
A = Gold Flash All Over (Standard)
B = Selective Gold Flash Contact Area/Tin On Tail
C = Tin All Over
G = 10µ" Gold Contact Area/Tin On Tail
I = 30µ" Gold Contact Area/Tin On Tail

Dimension C (1/100mm) (Top of Insulator to Pin Center)
1064 = 10.64mm (Standard)
 Or specify custom Top of Insulator to Pin Center
 eg. 0250 = 2.50mm
 (Maximum 1400 = 14.00mm)
 (Minimum 0930 = 9.30mm)



No. of Contacts
06 to 64

Packing Options
H = Tray (Standard)
D = Tube
G = Plastic Box

Insulator Material
N = Nylon 6T (Standard)
P = PBT
L = LCP

Dimension D (1/100mm) (Insulator Edge to End of Pin)
0300 = 3.00mm (Standard)
 Or specify custom Insulator Edge to End of Pin
 eg. 0250 = 2.50mm
 (Maximum 0600 = 6.00mm)
 (Minimum 0100 = 1.00mm)

Part Number		Product Description	
BG047		2.54mm pitch Shrouded Header	
Drawing Date		Dual Row, Through-Hole, Horizontal	
5th April 2007			
By	CC	Tolerances (Except as Noted)	Units:
Detail	BG047 B PCN	Length X ± 0.30 X.X ± 0.20 X.XX ± 0.15 X.XXX ± 0.10	Metric (mm)
Revision	B3	Angle X° ± 5° X.X° ± 2° X.XX° ± 1° X.XXX° ± 0.5°	
Date	10/10/17		



This drawing is confidential and copyright of Global Connector Technology, Ltd (GCT). This drawing must not be copied or disclosed without written consent. E & OE



www.gct.co

Not to Scale	Drawn By BC	Sheet No. 1/1
--------------	-------------	---------------