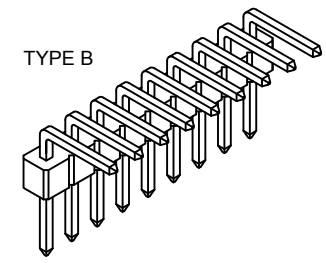
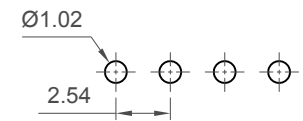
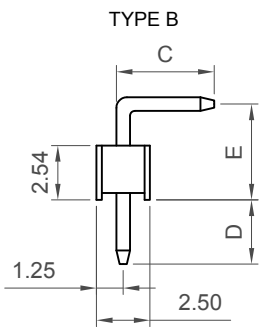
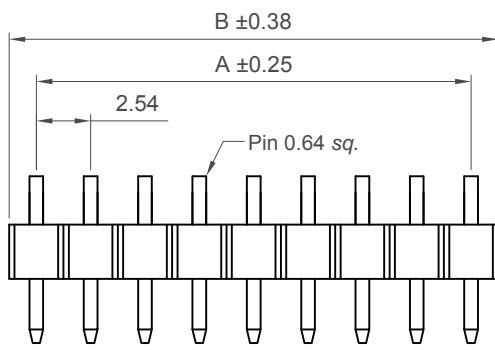
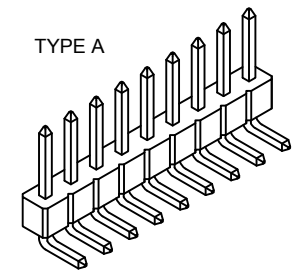
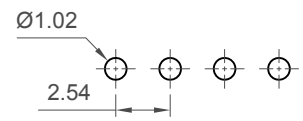
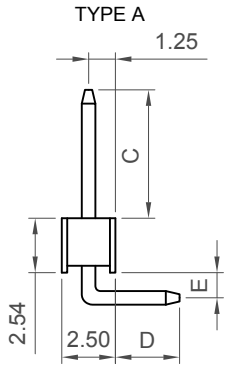
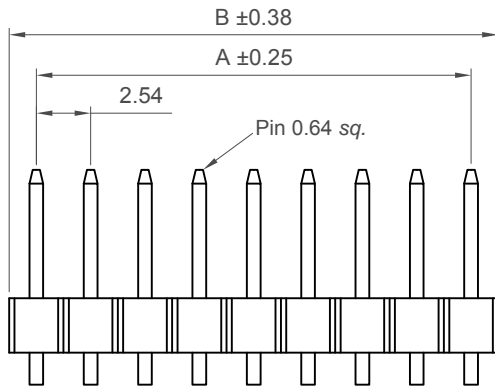


H  
G  
F  
E  
D  
C  
B  
A



**Ordering Grid**

|       |    |   |      |      |      |   |   |                               |
|-------|----|---|------|------|------|---|---|-------------------------------|
| BG075 | XX | X | XXXX | XXXX | XXXX | X | X | Request Samples and Quotation |
|-------|----|---|------|------|------|---|---|-------------------------------|

**No. of Contacts**  
02 to 40

**Contact Plating**  
**A = Gold Flash All Over (Standard)**  
 B = Selective Gold Flash Contact Area/Tin On Tail  
 C = Tin All Over  
 G = 10µ" Gold Contact Area/Tin On Tail  
 I = 30µ" Gold Contact Area/Tin On Tail

**Type**  
 1 = Type A  
 2 = Type B

**Dimension C (1/100mm) (Post Length)**  
**0600 = 6.00mm (Standard)**  
 Or specify Custom Post Height  
 eg. 0250 = 2.50mm  
 (Type A :Maximum 1200 = 12.00mm)  
 (Type B :Maximum 0700 = 7.00mm)  
 (Type A :Minimum 0100 = 1.00mm)  
 (Type B :Minimum 0257 = 2.57mm)

**Dimension D (1/100mm) (Tail Length)**  
**0300 = 3.00mm (Standard)**  
 Or specify Custom Footprint Width  
 eg. 0250 = 2.50mm  
 (Type A :Maximum 0700 = 7.00mm)  
 (Type A&B :Minimum 0100 = 1.00mm)

**Insulator Material**  
**N = Nylon 6T (Standard)**  
 L = LCP  
 P = PBT

**Dimension E (1/100mm)**  
 (Bottom of insulator to Pin Centre)  
**Type A: 0150 = 1.50mm (Standard)**  
**Type B: 0480 = 4.80mm (Standard)**  
 Or specify Dimension E  
 eg. 0250 = 2.50mm  
 (Type A :Maximum 0245 = 2.45mm)  
 (Type A :Minimum 0032 = 0.32mm)  
 (Type B :Maximum 0500 = 5.00mm)  
 (Type B :Minimum 0286 = 2.86mm)

**Packing Options**  
**G = Plastic Box (Standard)**  
 D = Tube  
 E = Tube with Cap

**Specifications**

**Material**  
 Insulator:  
 Standard: Polyamide, Nylon 6T, UL 94V-0  
 Options: Polymer, LCP, UL 94V-0  
 Polyester, PBT, UL 94V-0  
 Contact: Copper Alloy

**Plating**  
 See Ordering Grid

**Electrical**  
 Current Ratin: 3 Amp Per Pin  
 Contact Resistance: 20 mΩ max.  
 Insulation Resistance: 1000 MΩ min.  
 Dielectric Withstand Voltage: 600 V AC

**Mechanical & Environmental**  
 Operating Temperature: -40°C to +105°C

**Soldering Process**

Nylon 6T (Standard)  
 IR Reflow: 260°C for 10 sec.  
 Wave: 230°C for 5-10 sec.  
 Manual Solder: 350°C for 3-5sec  
 LCP (Option)  
 IR Reflow: 260°C for 10 sec.  
 Wave: 250°C for 5-10 sec.  
 Manual Solder: 350°C for 3-5 sec  
 PBT (Option) -  
 Manual Solder: 330°C for 3-5 sec.  
 (Not suitable for hi-temp process)

**Mates with (Subject to Pin Length)**

|       |       |       |       |       |
|-------|-------|-------|-------|-------|
| BG090 | BG095 | BG096 | BG100 | BG110 |
| BG115 | BG125 | BG126 | BG130 | BG135 |
| BG205 |       |       |       |       |

Perfect Planar Mating with  
 BG145 BG230

| Number of Contacts | Dimensions |        |
|--------------------|------------|--------|
|                    | A          | B      |
| 2                  | 2.54       | 5.08   |
| 3                  | 5.08       | 7.62   |
| 4                  | 7.62       | 10.16  |
| 5                  | 10.16      | 12.70  |
| 6                  | 12.70      | 15.24  |
| 7                  | 15.24      | 17.78  |
| 8                  | 17.78      | 20.32  |
| 9                  | 20.32      | 22.86  |
| 10                 | 22.86      | 25.40  |
| 11                 | 25.40      | 27.94  |
| 12                 | 27.94      | 30.48  |
| 13                 | 30.48      | 33.02  |
| 14                 | 33.02      | 35.56  |
| 15                 | 35.56      | 38.10  |
| 16                 | 38.10      | 40.64  |
| 17                 | 40.64      | 43.18  |
| 18                 | 43.18      | 45.72  |
| 19                 | 45.72      | 48.26  |
| 20                 | 48.26      | 50.80  |
| 21                 | 50.80      | 53.34  |
| 22                 | 53.34      | 55.88  |
| 23                 | 55.88      | 58.42  |
| 24                 | 58.42      | 60.96  |
| 25                 | 60.96      | 63.50  |
| 26                 | 63.50      | 66.04  |
| 27                 | 66.04      | 68.58  |
| 28                 | 68.58      | 71.12  |
| 29                 | 71.12      | 73.66  |
| 30                 | 73.66      | 76.20  |
| 31                 | 76.20      | 78.74  |
| 32                 | 78.74      | 81.28  |
| 33                 | 81.28      | 83.82  |
| 34                 | 83.82      | 86.36  |
| 35                 | 86.36      | 88.90  |
| 36                 | 88.90      | 91.44  |
| 37                 | 91.44      | 93.98  |
| 38                 | 93.98      | 96.52  |
| 39                 | 96.52      | 99.06  |
| 40                 | 99.06      | 101.60 |

|              |          |   |                 |
|--------------|----------|---|-----------------|
| Part Number  |          | Product Description   |                 |
| BG075        |          | 2.54mm Pitch Pin Header, Single Row, Through-Hole, Horizontal |                 |
| Drawing Date |          | 1st November 2006   |                 |
| By           | CC       | Tolerances (Except as Noted)                                  | Units:          |
| Detail       | BG075    | Length X. ± 0.30  | Metric (mm)     |
| Revision     | D3       | D PCN XX ± 0.20   | Angle X.X° ± 5° |
| Date         | 10/05/18 | X.XX ± 0.15   | X.XX° ± 2°      |
|              |          | X.XXX ± 0.10  | X.XXX° ± 1°     |
|              |          |   | X.XXX° ± 0.5°   |



This drawing is confidential and copyright of Global Connector Technology, Ltd (GCT). This drawing must not be copied or disclosed without written consent. E & OE



www.gct.co

|              |              |               |
|--------------|--------------|---------------|
| Not to Scale | Drawn By LYH | Sheet No. 1/1 |
|--------------|--------------|---------------|