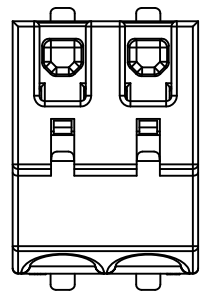
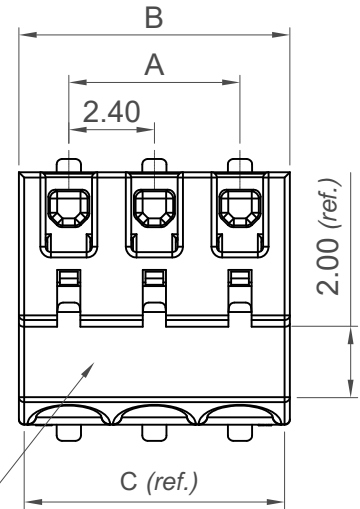


1 Contact

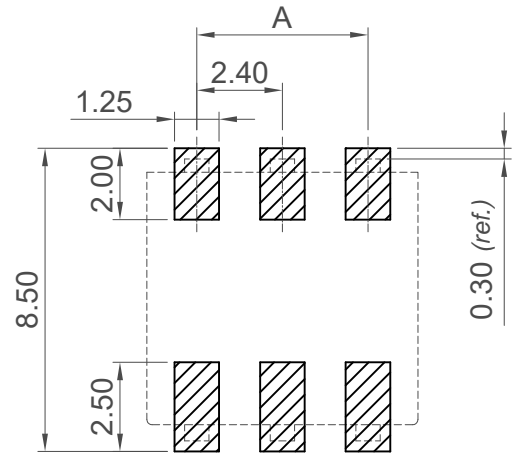


2 Contacts



3 Contacts

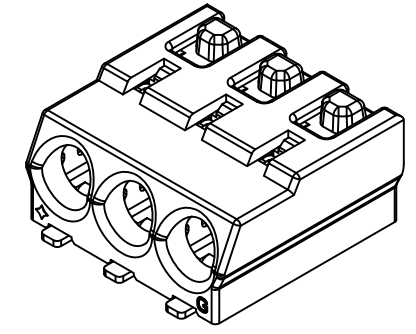
Pick & Place Area



Recommended PCB Layout

General Tolerance: ± 0.05
as viewed from component side

▨ Solder Area □ Component Outline



Specifications 规格

Material 物料
 Insulator 绝缘体: LCP, UL 94V-0 (Cream)
 Plastic Cover 塑胶外壳: LCP, UL 94V-0 (Cream)
 Contact Terminal 接触端子: Copper Alloy T=0.20mm

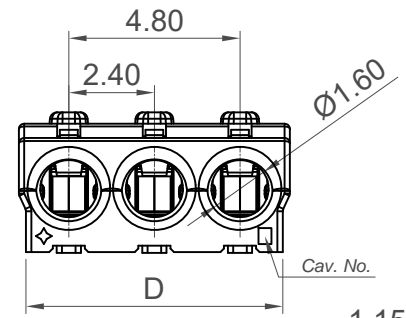
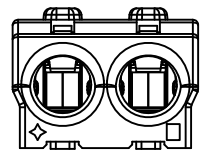
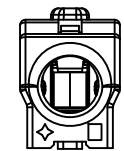
Plating 电镀
 Contact 接触: Tin over Nickel

Electrical 电气
 Voltage Rating 电压额定值: 300V max.
 Current Rating 电流额定值: 4 Amp max.
 Contact Resistance 接触电阻值: 20 mΩ max.
 Insulation Resistance 绝缘电阻值: 1000 MΩ min.
 Dielectric Withstand Voltage 耐电压: 1500 V AC

Mechanical & Environmental 机械 & 环境
 Operating Temperature 工作温度: -25°C to +105°C

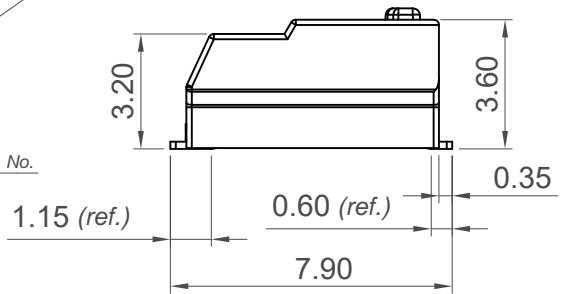
Applicable Wire Range 适用线径规格:
 Stranded Wire 多股线: #24AWG, #22AWG
 Max. Insulation OD 最大线径: $\varnothing 1.50$ mm

Note: Please see Product Specification document for more detailed information.



$\varnothing 1.60$

Cav. No.



Ordering Grid

BL300 — **XX** — **A**

No. of Contacts
01 - 03

Request Samples and Quotation

Packing Options
A = Tape & Reel
(1200 per reel)

Number of Contacts	Dimensions			
	A	B	C	D
1	n/a	2.80	2.50	2.40
2	2.40	5.20	4.90	4.80
3	4.80	7.60	7.30	7.20

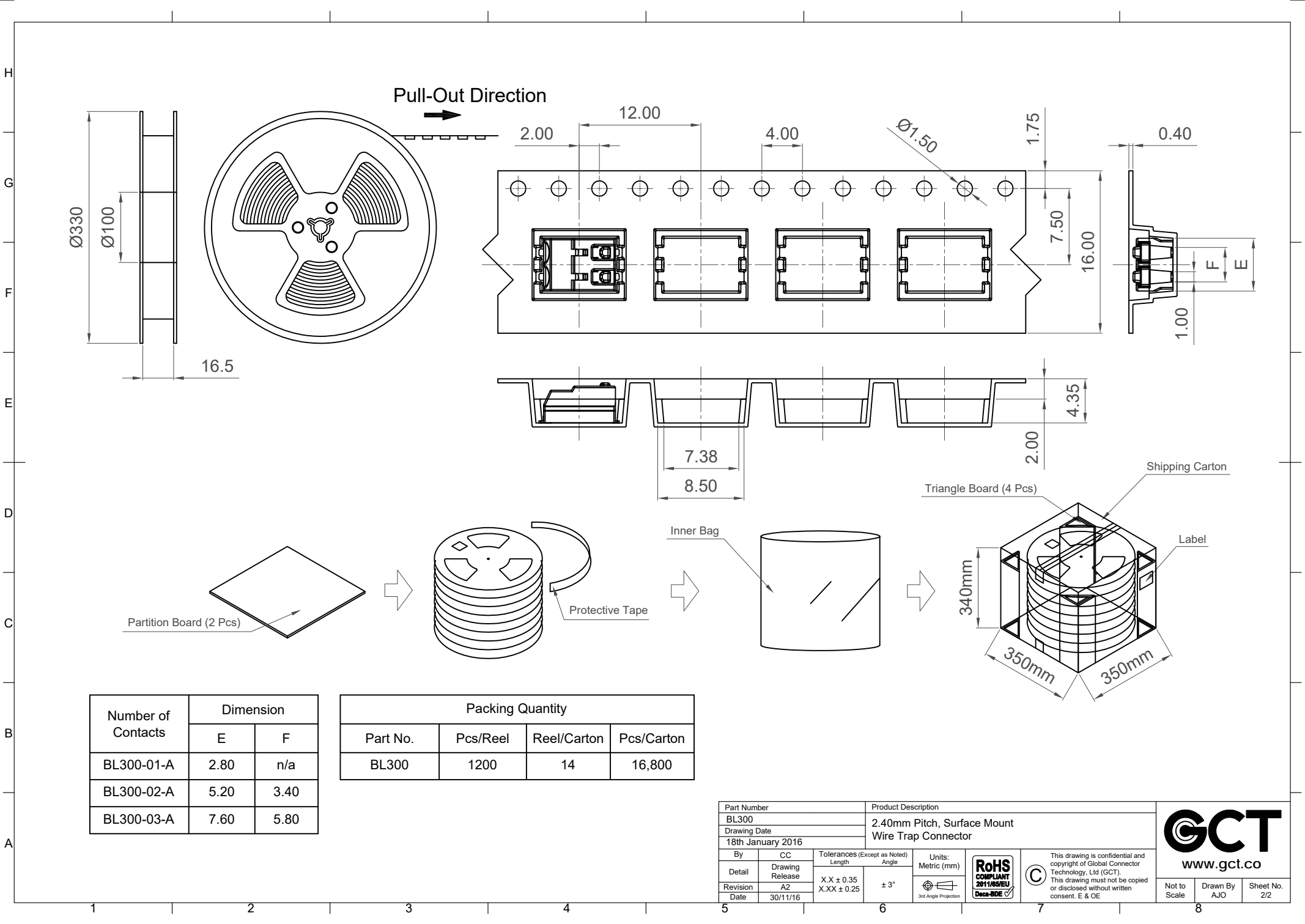
Part Number		Product Description	
BL300		2.40mm Pitch, Surface Mount Wire Trap Connector	
Drawing Date		18th January 2016	
By	CC	Tolerances (Except as Noted)	Units:
Detail	Drawing Release	Length	Metric (mm)
Revision	A2	$X.X \pm 0.35$ $X.XX \pm 0.25$	$\pm 3^\circ$
Date	30/11/16		3rd Angle Projection



This drawing is confidential and copyright of Global Connector Technology, Ltd (GCT). This drawing must not be copied or disclosed without written consent. E & OE



Not to Scale	Drawn By AJO	Sheet No. 1/2
--------------	--------------	---------------



Number of Contacts	Dimension	
	E	F
BL300-01-A	2.80	n/a
BL300-02-A	5.20	3.40
BL300-03-A	7.60	5.80

Packing Quantity			
Part No.	Pcs/Reel	Reel/Carton	Pcs/Carton
BL300	1200	14	16,800

Part Number		Product Description	
BL300		2.40mm Pitch, Surface Mount	
Drawing Date		Wire Trap Connector	
18th January 2016			
By	CC	Tolerances (Except as Noted)	Units:
Detail	Drawing Release	Length	Metric (mm)
Revision	A2	X.X ± 0.35	± 3°
Date	30/11/16	X.XX ± 0.25	
		3rd Angle Projection	



This drawing is confidential and copyright of Global Connector Technology, Ltd (GCT). This drawing must not be copied or disclosed without written consent. E & OE



Not to Scale	Drawn By AJO	Sheet No. 2/2
--------------	--------------	---------------