

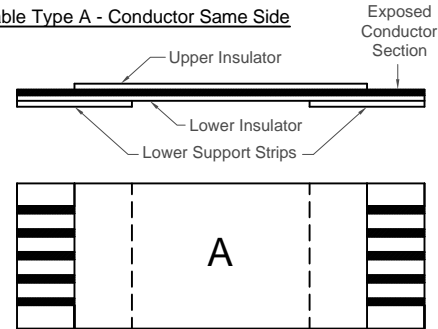
Cable Width (W)	
Pitch (mm)	Total Cable Width (mm)
0.50	0.5 x (No. of Conductors+1) ± 0.08mm
1.00	1.0 x (No. of Conductors+1) ± 0.15mm

Total Thickness
0.3±0.05mm

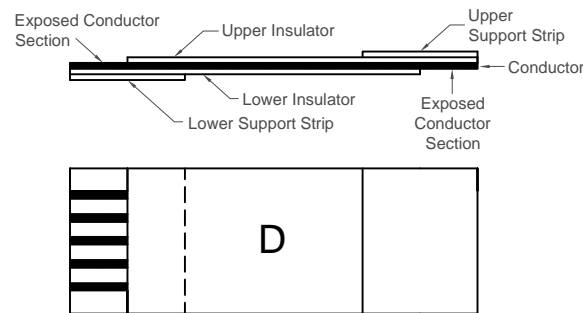
Support Strip and Plating Options by Pitch			
Pitch (mm)	Support Strip Length (mm)	Plating Options (conductor thickness x width (mm))	
		Tin	Gold
0.50	6.00	0.035 x 0.3 (A)	0.035 x 0.3 (A)
1.00	8.00	0.035 x 0.65 (D)	0.035 x 0.65 (D)
		0.05 x 0.65 (E)	0.05 x 0.65 (E)
		0.1 x 0.65 (C)	0.05 x 0.65 (E)

Special Shielding Options (Contact GCT)			
Material	Usage	Earth Drain	Remarks
Aluminium foil with conductive glue (Standard)	General shielding	Yes	Polyester film laminated non-conductive surface
Copper foil with conductive glue	High performance shielding	Yes	
Shielding Grounding Conductors		Decide the conductor numbers you require grounded to the shield.	
Conductor 1		On Cable type A, the position of conductor 1 is immaterial	
Conductor 1		Please take note, however, of the position of conductor 1 on cable type D (see left)	

Cable Type A - Conductor Same Side



Cable Type D - Conductor Opposite Side



Ordering Grid



Pitch
05 = 0.50mm
10 = 1.00mm

Number of Conductors
06-80 (0.50mm pitch)
04-50 (1.00mm pitch)

Cable Type
A = Conductor Same Side
D = Conductor Opposite Side

Overall Length (L)
Specify cable length (Minimum = 30mm)
eg 0030 = 30mm
0100 = 100mm

Specifications

Materials

Conductor: Tinned Copper
Insulation: Flame retardant polyester, White
Supporting Tape: Polyester, Blue

Electrical

Voltage Rating: 60V
Current Rating: 0.5mm pitch=0.5A
1.0mm pitch=1A

Mechanical & Environmental

Operating Temperature: 80°C
(High Temperature version available, contact GCT)
Durability: 30 Cycles

Notes

No Printing on cable.
For tolerance information, contact GCT

For non-standard options, contact GCT

- Exposed conductor length
- Support tape length
- Conductor thickness/width
- Folding/bending to an angle
- High Temp. 105°C and Voltage: 60V

Request Samples and Quotation

Plating
T = Tin (**Standard**) (MOQ 2,000 pcs)
(MOQ 5,000 with Shielded and Shielded/Grounding)
G = Gold (Conductor Thickness x Widths A, D & E only)
(MOQ 5,000 pcs)

Conductor Thickness x Width
A = 0.035 x 0.3 (0.50mm pitch only)
D = 0.035 x 0.65 (1.00mm pitch only)
E = 0.05 x 0.65 (1.00mm pitch only)
C = 0.1 x 0.65 (1.00mm pitch only) (Tin plating only)

Part Number N/A		Product Description Flat Flex Cable Ordering Information		 www.gct.co
Drawing Date 23rd May 2011				
By Detail	CC Drawing Release	Tolerances (Except as Noted) Length Angle	Units: Metric (mm)	 This drawing is confidential and copyright of Global Connector Technology, Ltd (GCT). This drawing must not be copied or disclosed without written consent. E & OE
Revision Date	A4 03/02/17			
Not to Scale	Drawn By SA	Sheet No. 1/1		